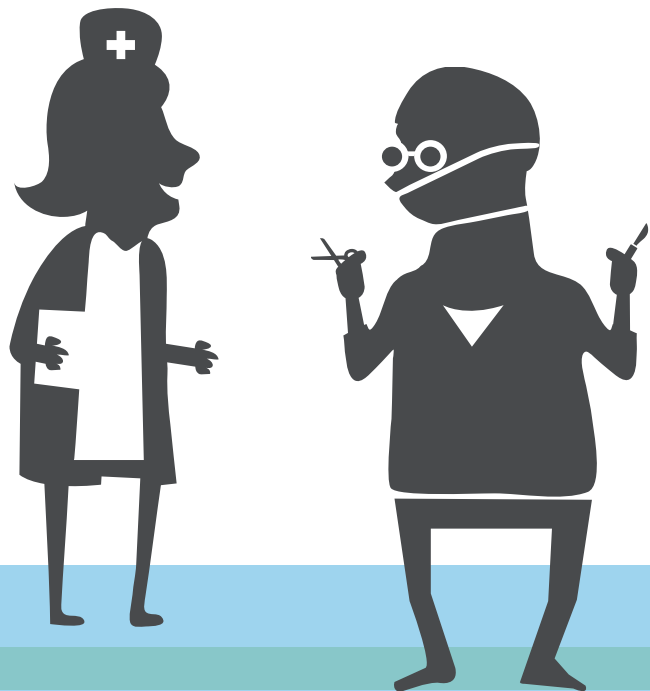


Registratie aan de bron

Zorginformatie delen en optimaliseren

Patient Summary (BgZ)

Specification based on zibs release 2017



19-4-2018
Registratie aan de bron
Versie: 1.1

Content

| | |
|--|---|
| Introduction | 2 |
| BgZ – specification based on zibs release 2017 | 3 |

Documenthistory

| Versie | Datum | Omschrijving |
|--------|---------------|--|
| 1.0 | 21 march 2018 | Version prepared by the Architecture team and determined by the Program team |
| 1.1 | 19 april 2018 | The wrong version of a number of zibs was shown in v1.0 of this document, and it contained a number of typos and wrong cardinalities. That has been corrected in this version. |

Introduction

This document establishes the specification of the Patient Summary (BgZ), based on health care information building blocks (zibs) release 2017. It replaces the “Basic Healthcare Data Set” document dd. May 1, 2016 in which the specification of the BgZ is laid down, based on healthcare information building blocks (zibs) release 2015

The document is primarily intended for project leaders, content experts, information analysts, architects, developers, suppliers and others who are involved in the implementation of the BgZ and for others who are interested in the detailed structure and content of the BgZ

The specification in this document differs on two aspects from the specification that is based on the zibs release 2015:

- A structure has been made of 18 sections in which the parts that make up the BgZ are grouped. These sections are very similar to the sections of CCR / CCD and make it possible, among other things, to cluster parts and to introduce structure into the technical implementation structure.
- A number of zibs have been replaced by a new release of the zib.

The definition of BgZ content has not changed.

The specification of the BgZ is shown in the following paragraph.

BgZ – specification based on zibs release 2017

| # | Section | # | BgZ onderdeel | Inhoud | Zib | Versie |
|----|-----------------------------|------|----------------------------|---|--|--------|
| 1 | Demografie en identificatie | 1.1 | Patiëntgegevens | NAW gegevens, BSN, geboortedatum, geslacht, overlijdensinformatie, contactgegevens van de patiënt | Patient | v3.1 |
| | | 1.2 | Marital Status | Last known marital status | MaritalStatus | v3.0 |
| 2 | Payer information | 2.1 | Payer information | The payer information of the patient | Payer | v3.1 |
| 3 | Advanced Directives | 3.1 | Treatment directive | Known treatment directives | TreatmentDirective | v3.1 |
| | | 3.2 | AdvanceDirective | Known Advance directives | AdvanceDirective | v3.1 |
| 4 | Contactpersons | 4.1 | Contactperson | First relation/contactperson | ContactPerson | v3.1 |
| 5 | Functional status | 5.1 | Functional/mental status | Last known functional/mental status | FunctionalOrMentalStatus | v3.1 |
| 6 | Problems en diagnoses | 6.1 | Problems (incl. diagnoses) | Known problems of van all probleemtyps | Problem | v4.1 |
| 7 | Social history | 7.1 | Living situation | Last known living situation | LivingSituation | v3.1 |
| | | 7.2 | Drug use | Known drug use | DrugUse | v3.2 |
| | | 7.3 | Alcohol use | Known alcohol use | AlcoholUse | v3.1 |
| | | 7.4 | Tabacco use | Known tabacco use | TabaccoUse | v3.1 |
| | | 7.5 | Nutrition advice | Known nutrition advice | NutritionAdvice | v3.1 |
| 8 | Alerts | 8.1 | Alerts | Known alerts | Alert | v3.2 |
| 9 | Allergies | 9.1 | Allergies | Known allergies | AllergyIntolerance | v3.2 |
| 10 | Medication | 10.1 | Medicatie agreement | Known medication agreements | MedicationAgreement | v1.0.1 |
| | | 10.2 | Administration agreement | Known administration areements | AdministrationAgreement | v1.0.1 |
| | | 10.3 | Medication use | Known medication use | MedicationUse2 | v1.0.1 |
| 11 | Medical devices | 11.1 | Medical devices | Known medical devices | MedicalDevice | v3.1 |
| 12 | Vaccinations | 12.1 | Vaccination | Known vaccinations | onVaccinatie | v3.1 |
| 13 | Vital signs | 13.1 | Bloodpressure | Last known bloodpressure | BloodPressure | v3.1 |
| | | 13.2 | Bodyweight | Last known bodyweight | BodyWeight | v3.1 |
| | | 13.3 | Bodyheight | Last known bodyheight | BodyHeight | v3.1 |
| 14 | Results | 14.1 | Laboratory testresults | Known laboratory testresult clinical chemistry, last result | LaboratoryTestResult | v4.1 |
| 15 | Procedures | 15.1 | Procedures | Known surgical procedures | Procedure | v4.1 |
| 16 | Encouters | 16.1 | Encounters | Known hospitalizations (inpatient encounters) | Encounter | v3.1 |
| 17 | Plan of Care | 17.1 | Geplande zorgactiviteiten | Known planned care activities | PlannedCareActivityForTransfer | v3.1 |
| 18 | Health professionals | 18.1 | General practitioner | The information of the general practitioner of the patient | HealthProfessional | v3.2 |